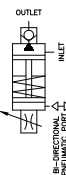


SV673

Isolation Diaphragm Precision Dispensing Pump
Pneumatic Operated, Piston Driven
Output/Stroke: 100 μ l to 1500 μ l



Valcor Dispensing / Metering Series



DESCRIPTION

The SV673 series dispensing pump is a pneumatically operated high purity piston driven pump that delivers a wide range of fluids with high precision. By combining the easily adjustable stroke of the pump with variable cycle rates, users have complete control of the volume and rate of dispense for specific applications. A flexible diaphragm isolates the liquid from any metallic parts. Wetted parts are Polypropylene and Viton or EPDM, making this series suitable to handle a wide range of fluids.

APPLICATIONS

The SV673 series is suitable for a variety of dispensing applications such as the following:

- Adhesive or ink dispensing
- Reagents for analyzers or clinical instruments
- Acidic and basic solutions
- Caustic fluids
- Chemicals for pools & spas
- Syrup & Flavoring for soda machines
- Fragrance for personal products
- Analyzer sampling

FEATURES

- Ideal for use in hazardous environment where no electrical connection is permitted
- Adjustability over a wide range of operating conditions
- Volume output per stroke is adjusted by mechanically setting stroke
- Flow rate per minute is adjusted by frequency of operation
- Repeatability within 2%
- Self priming: can start dry and capable of lifting 5' of H₂O.
- Can handle fluid viscosity as high as 10,000 centistokes
- Maintenance free and long life
- Choice of elastomer; Viton or EPDM
- Built-in mounting brackets

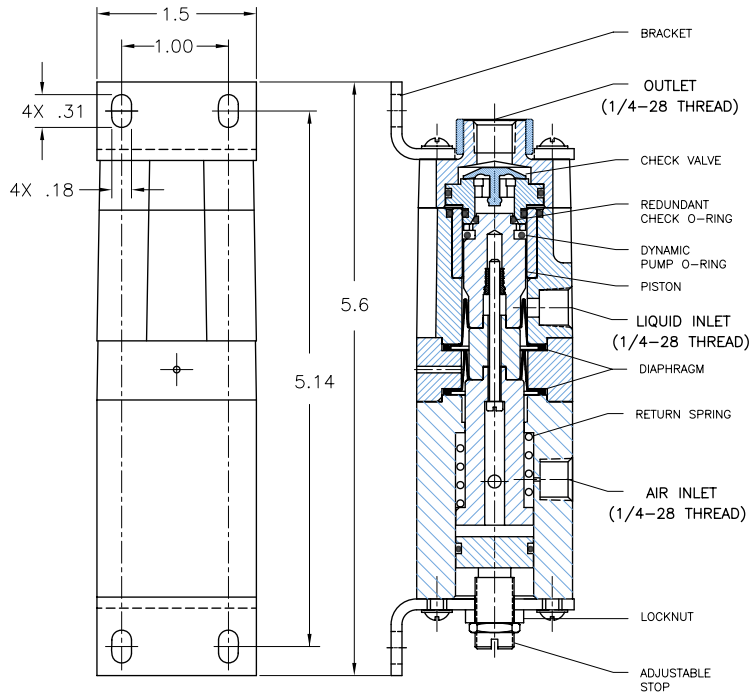


VALCOR SV673 SPECIFICATIONS

Construction

Pump Parts in Contact with Fluid

Wetted Materials Polypropylene, Glass, EDPM or Viton



Specifications

Precision Dispensing Pump

Tube Connection	1/4 - 28 Thread
	Min. inlet tube 1/8" I.D.
Actuation Pressure	30 to 60 PSI air
Output per Stroke	100 to 1500 µl
Max. Stroke per Minute	60 on H2O
Max. Dispense Rate	90 ml/min
Max. Priming Height	60" of H2O
Repeatability	±2%
Special Requirements	Consult Factory

How to specify part numbers

Part Number	Description
SV673AV	SV673 pump with Viton Elastomer
SV673AE	SV673 pump with EPDM Elastomer