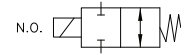


# SV76

2-way Normally Open  
Diaphragm Isolation Construction



Valcor PTFE Instrumentation Series



## DESCRIPTION

The SV76 series valves utilize a PTFE diaphragm to seal on a PTFE seat. As a result, these valves are capable of handling a wide range of corrosive or high purity media by isolating all metallic components from the fluid path. Other materials including PEEK & Kel-F are available as body material. Consult factory for availability.

## APPLICATIONS

The SV76 diaphragm isolation series is suitable for a broad range of applications, including:

- Ink Jet Printers
- Chromatography
- Clinical or Chemical Analyzer
- Chemical mixing/dispensing
- Laboratory equipment

## FEATURES

- Diaphragm isolation construction for high purity process
- Handles corrosive and aggressive fluids
- Compact low dead volume designs
- Low power consumption solenoids
- Bidirectional flow
- Direct acting constructions
- Long life expectancy



## VALCOR SV76 SPECIFICATIONS

### Construction

#### Valve Parts in Contact with Fluid

Body	PTFE
Diaphragm	PTFE

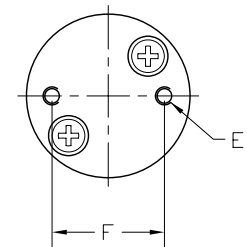
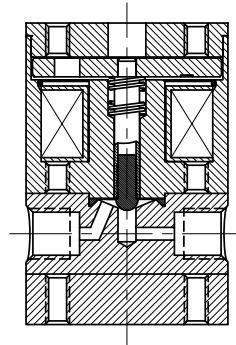
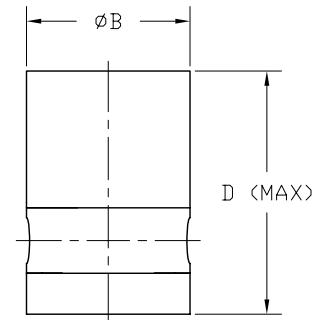
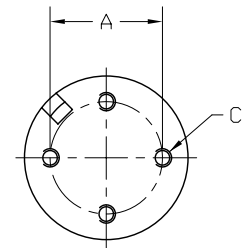
#### Other Parts

Armature	430F SS
Spring	303 SS
Coil Housing	Nickle Plated Steel
Base Plate	Nickle Plated Steel

Body is also available in PEEK and Kel-F  
Consult factory for availability of specific constructions

#### Envelope Dimensions:

Model Number	Dimensions					
	A (in.)	ΦB (in.)	C	D (in.)	E	F (in.)
SV76P61T	0.50	0.75	#2 - 56	1.15	#2 - 56	0.50
SV76P25T	0.687	1.00	#4 - 40	1.50	#4 - 40	0.687
SV76P60T	0.884	1.25	#4 - 40	1.78	#4 - 40	0.844
SV76P48T	1.125	1.50	#4 - 40	2.10	#4 - 40	1.125



### Specifications

Port Size	Orifice Size (ins.)	Max. Operating Pressure (PSIG)		Model Number	Voltage	Wattage	Internal Volume (µl)
		Gas & Liquid (PSI)	Vacuum (in Hg)				
SV76 2-way Normally Open							
10 - 32	0.040"	30	28	SV76P61T-1	12 VDC	1.0	14
1/4 - 28	0.062"	30	28	SV76P25T-1	12 VDC	1.5	41
1/4 - 28	0.095"	30	28	SV76P60T-1	12 VDC	4.2	103
1/8" NPS*	0.156"	30	28	SV76P48T-1	12 VDC	7.2	335
10 - 32	0.040"	30	28	SV76P61T-2	24 VDC	1.0	14
1/4 - 28	0.062"	30	28	SV76P25T-2	24 VDC	1.5	41
1/4 - 28	0.095"	30	28	SV76P60T-2	24 VDC	4.2	103
1/8" NPS*	0.156"	30	28	SV76P48T-2	24 VDC	7.2	335

For temperature and duty cycle information, please consult "temp and duty cycle" link under Technical Information on our website.

Alternate voltage of 6 VDC & 115V/60 HZ available upon request. Please consult factory for availability & part number.

High pressure version available up to 100 PSI (-HP). Please consult factory for availability of specific constructions.

\*1/8"-27 NPS (National Pipe Straight) thread. Flat bottom.